





Who we are

Your Cockpit was established in order to fulfill the dream of 'home automation for everyone'.

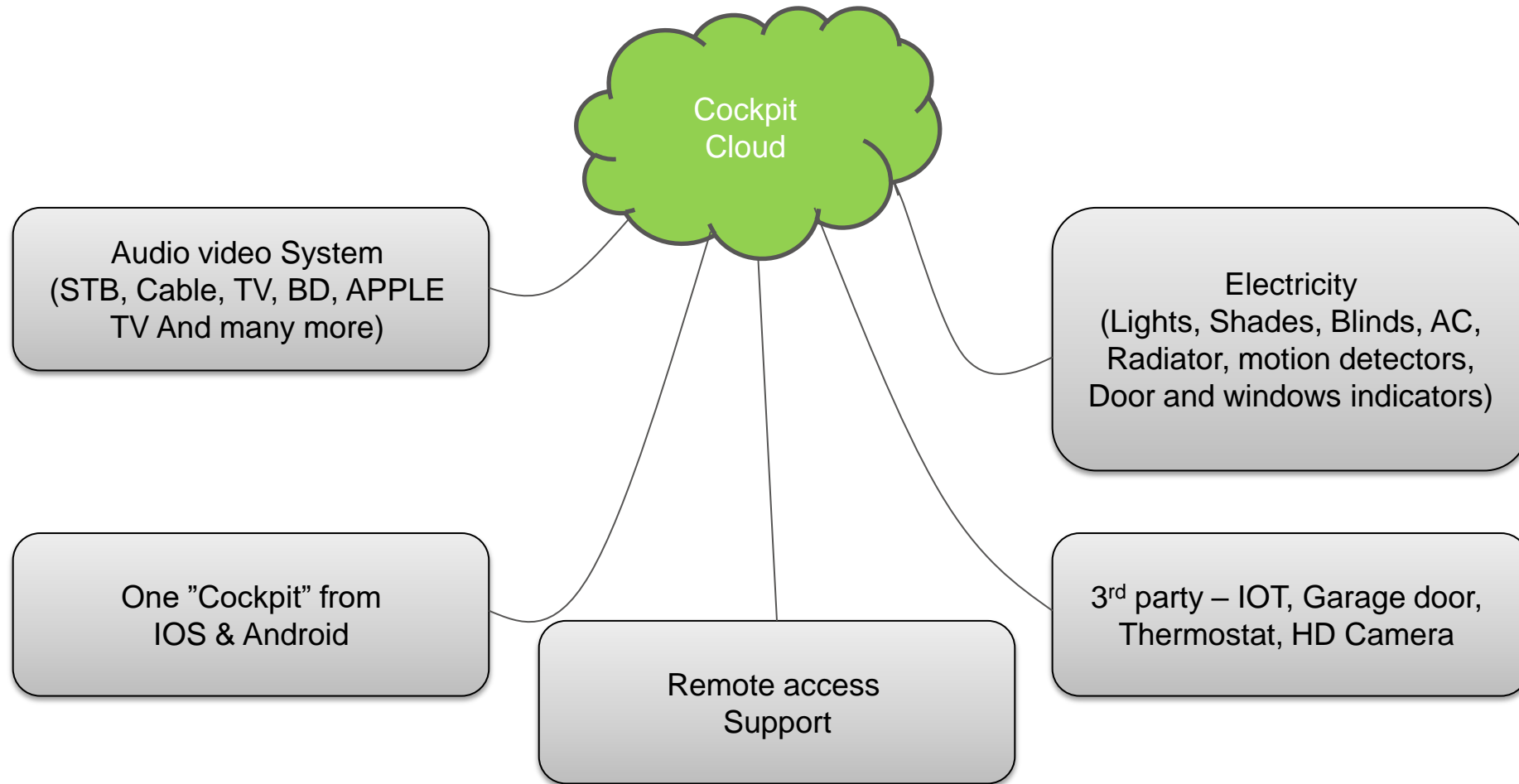
Up to now, the construction process of a smart home consumed a long time, quarrying walls and high expenses.

The vision that management of a smart home must be simple and accessible origin Cockpit technology development.

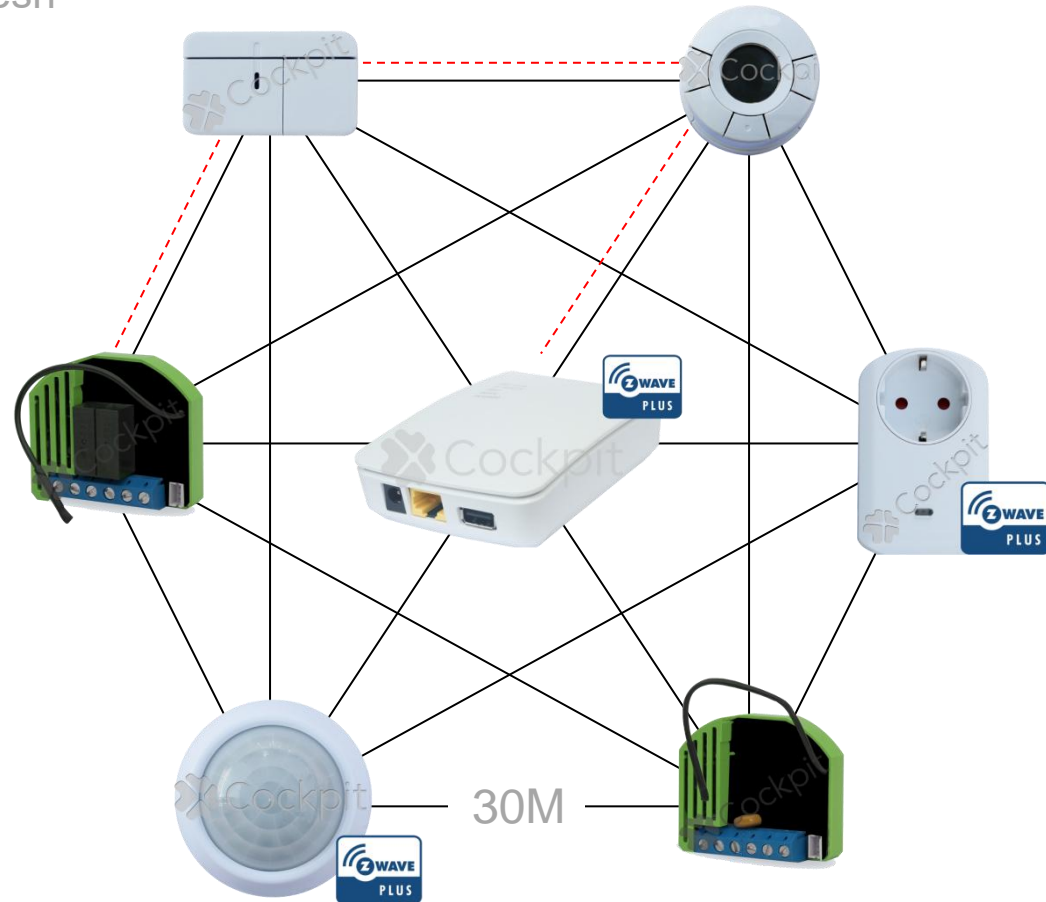
Today, Your Cockpit offers you the world's most advanced application for managing your smart home.

YourCockpit application is based on IOT – the Internet of Things, which allows clever, cost-effective and efficient management to all household appliances.

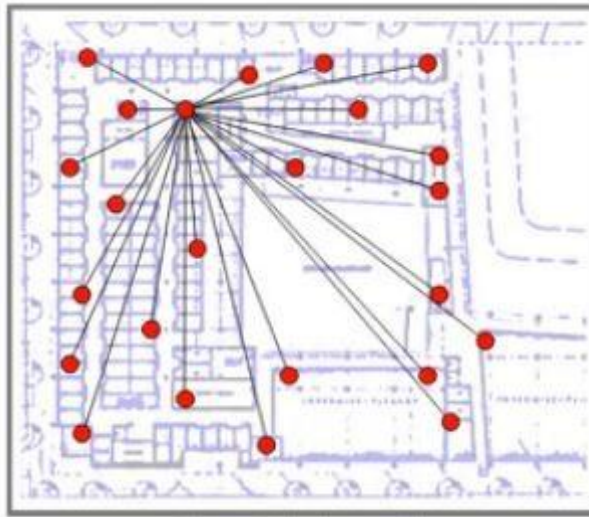
- The solution and the components
- Cockpit Automation (Lights, Shades, Climates, Sensors Camera, IOT)
- Cockpit controlling Audio and Video (TV, CABLE etc.)
- The integration (Cloud software)
- The Interface of Cockpit
- Support for remote access controlling
- The Benefits of Cockpit
- IOT – Internet Of Things



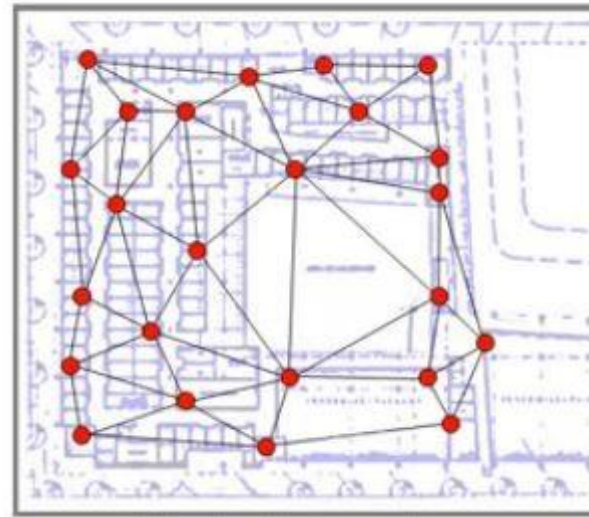
- Everything “speaks” with everything mesh technology



- Mesh (RF) VS star (WI-FI)



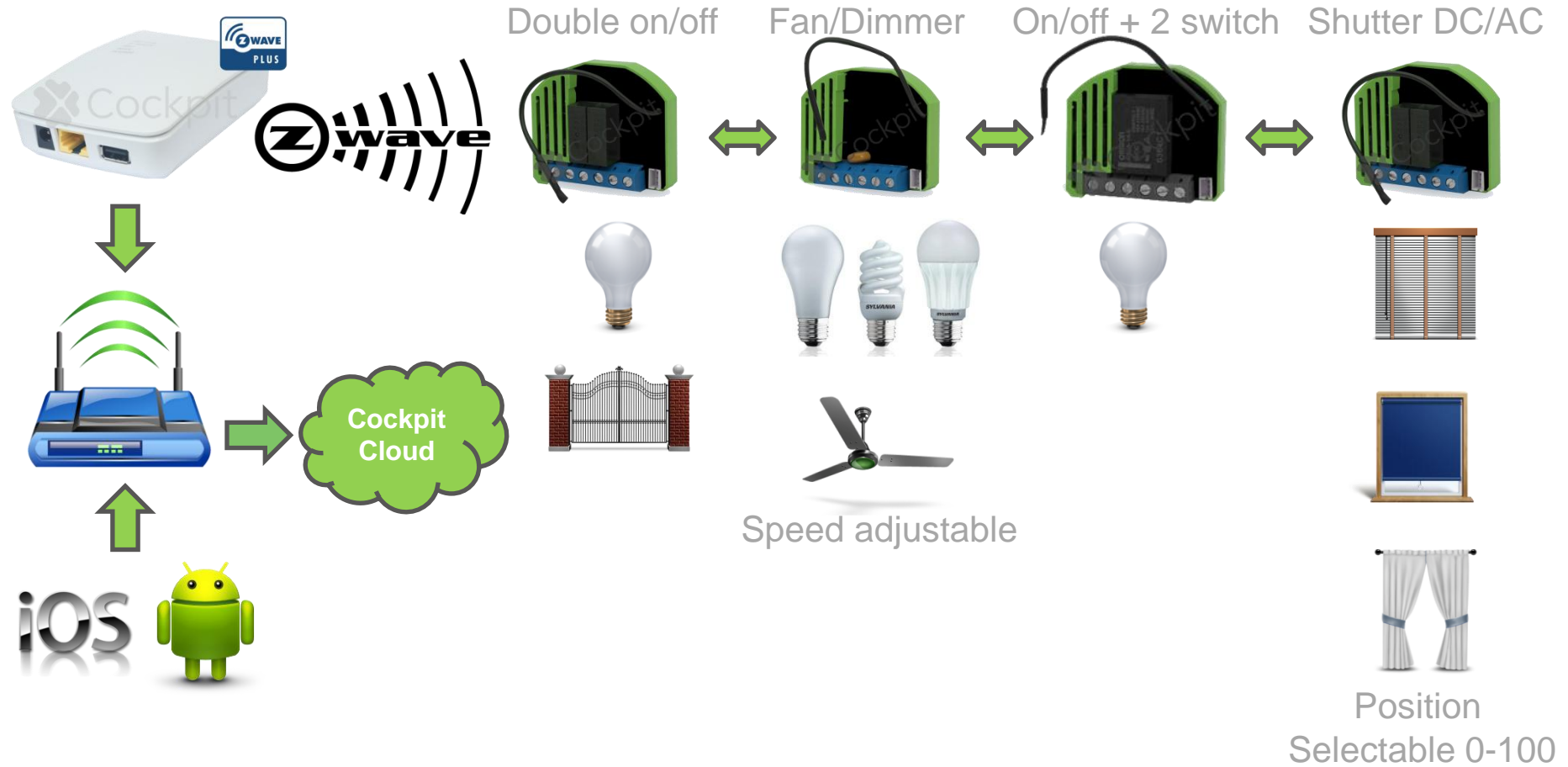
Star



Mesh

- High speed processor Gateway
- Auto backup in Cockpit cloud
- Cloud access from anywhere
- No more charges for public IP address or DDNS
- Web or Smart phone configurator, No need an external software
- 6 Different levels to accesses (Administrator to guest)
- Unlimited Email and push notifications
- Energy consumption monitor and save energy tools
- Editable scenes for end users from any application (IOS, Android or web browser - IE, Chrome, Firefox)
- IOT support
- HD Camera support







Double on/off
2 x 4 AMPER
2 x 920W



Single on/off or Contact closure
1 x 10 AMPER
1 X 2300W
2 x Free inputs to switch or sensor (in 24DC)

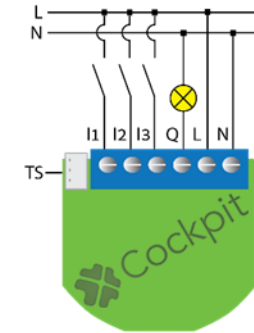


Shutter or drapes 24VDC/ 230AC
Auto Calibration
Support venetian blind slats tilting

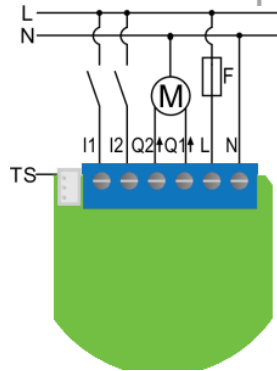


Dimmer or Fan 140W
0.85 AMPER
2 x Free inputs to switch or sensor (in 24DC)

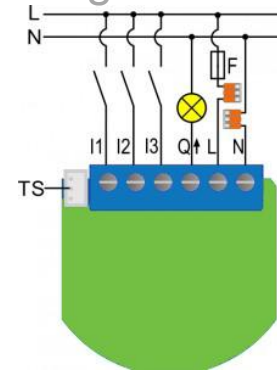
Electric schema



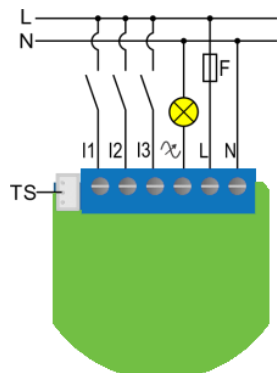
Shutter or drapes



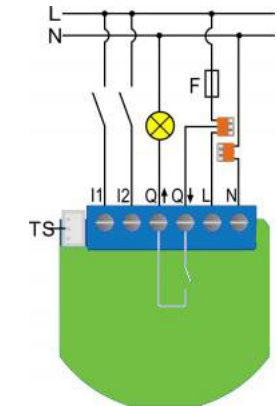
Single on/off



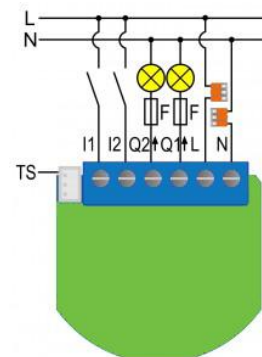
Dimmer or Fan

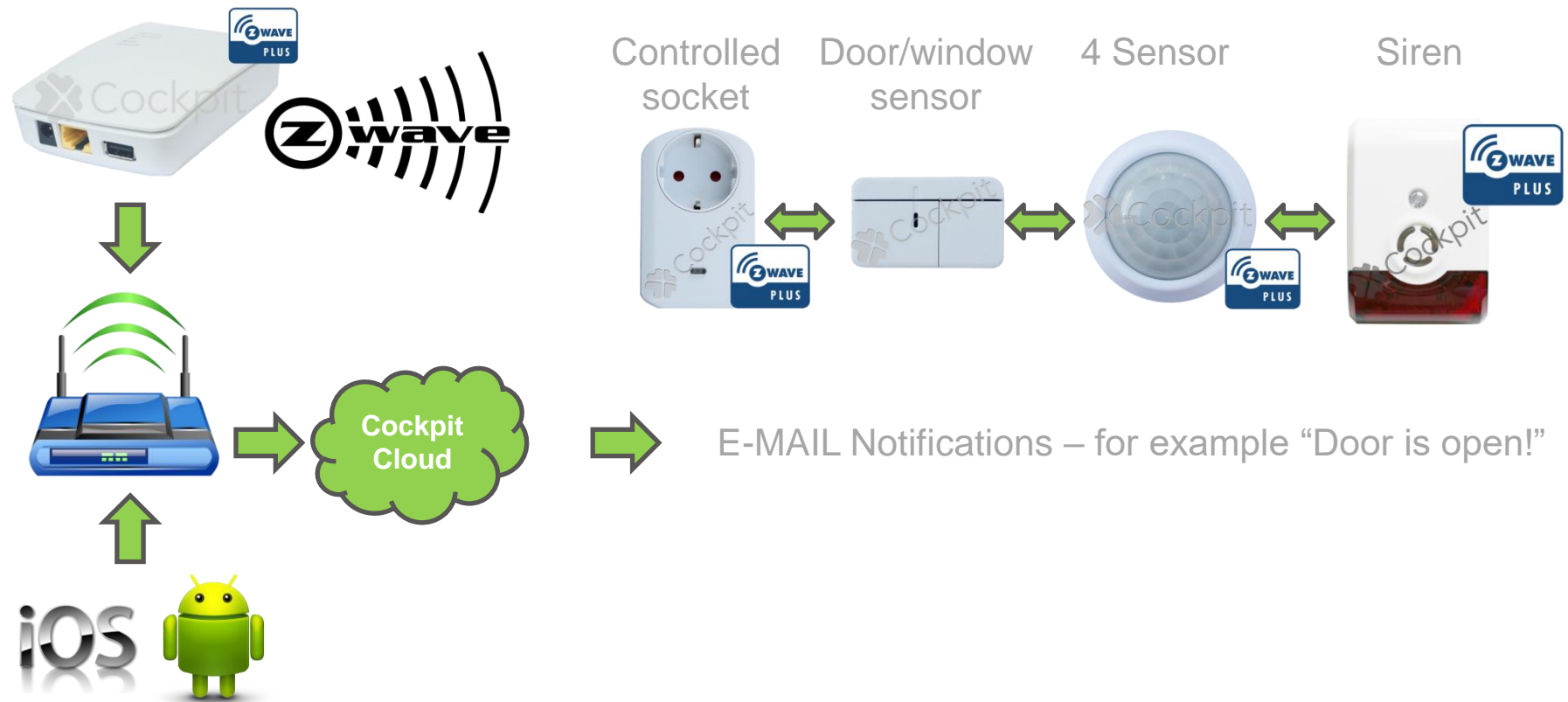


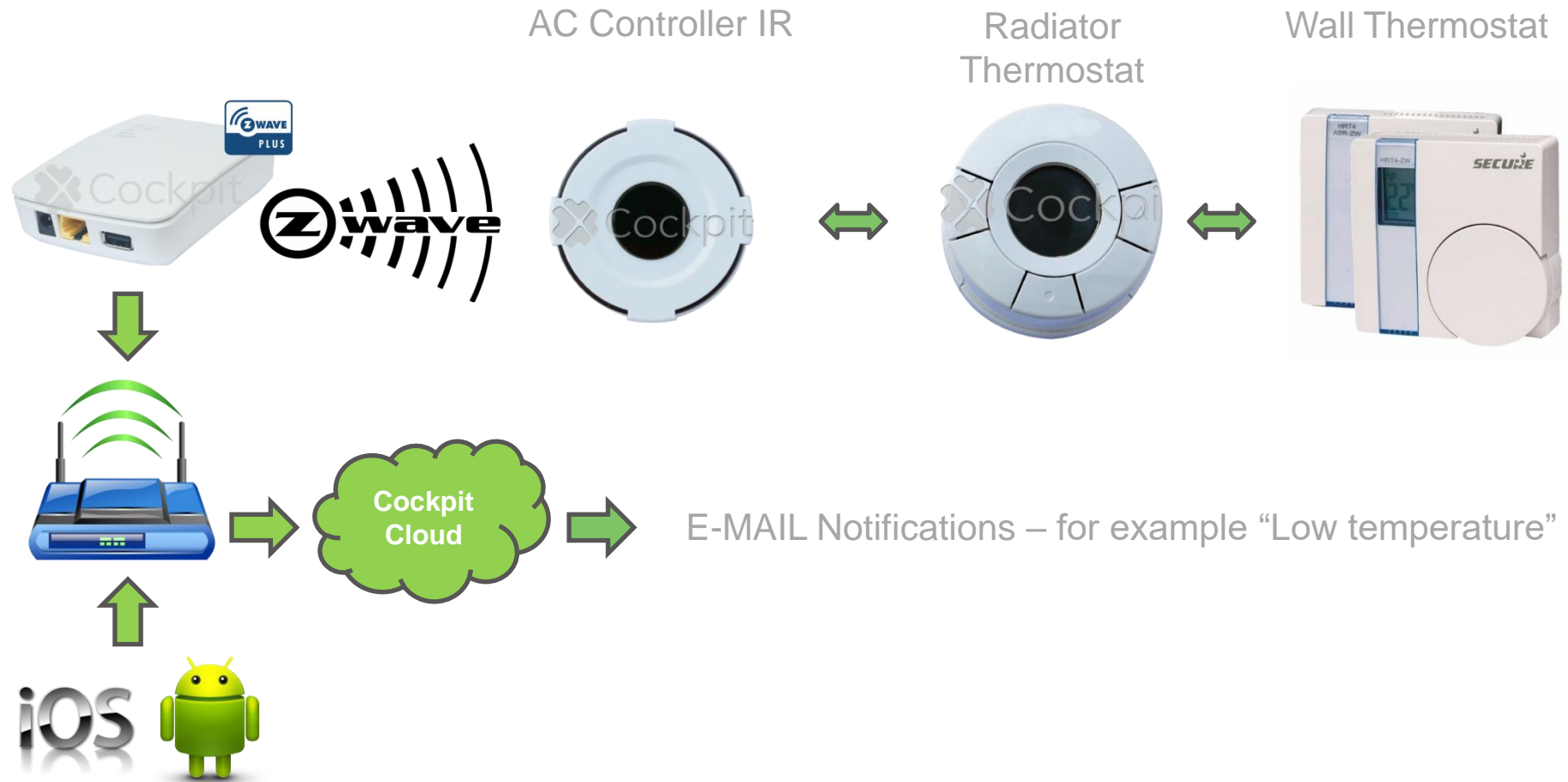
Contact closure

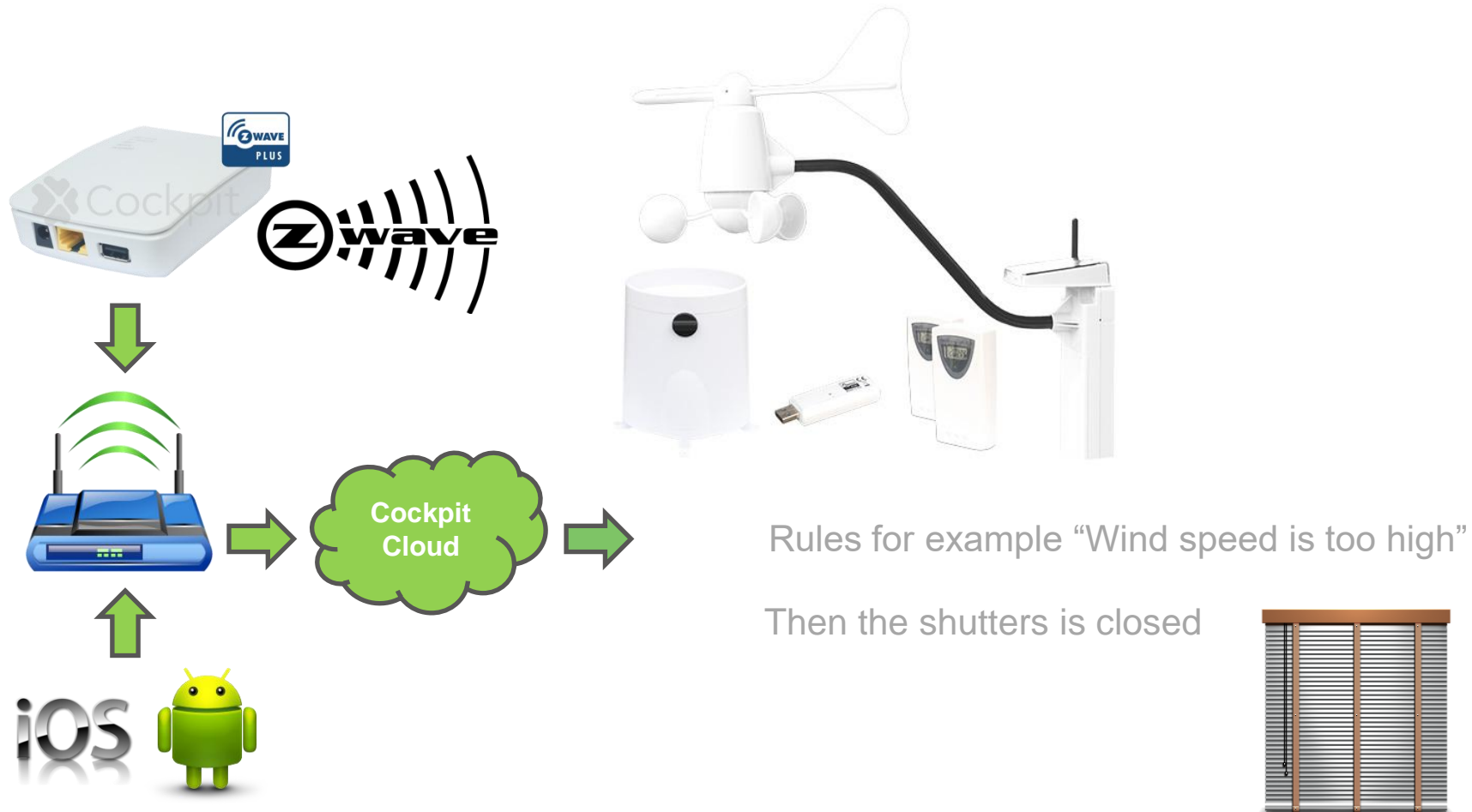


Double on/off









- Cockpit is the smallest chip in the market
- Microchip have Built-in energy monitor
- External thermostat Optional
- Shutter microchip there is an automatic calibration option to put it in any position.
- Shutter unit supports venetian blind slats tilting.
- Low voltage Shutter unit 12-24 VDC supports venetian blind slats tilting.
- The Dimmer unit supports a big range of bulb types.
- The first Dimmer module also supports control of low voltage halogen lamps with electronic transformer, dimmable compact fluorescent light and dimmable LED bulbs.
- Cockpit Flush Dimmer supports the classical incandescent lights, halogen lamps
- Operated by 230 VAC (High Voltage Halogen), dimmable fluorescent lights and dimmable LED lights



Multimedia all in one APP from your smart device

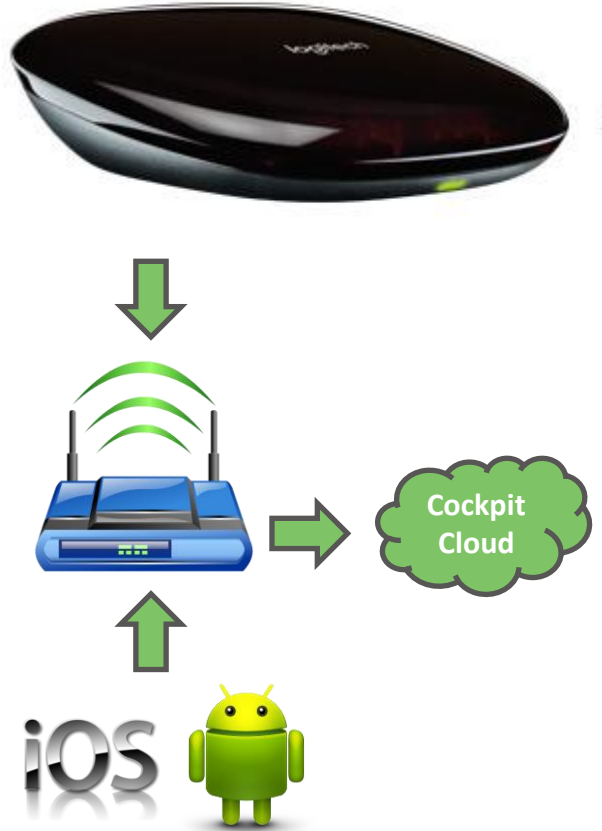
Audio and Video controller

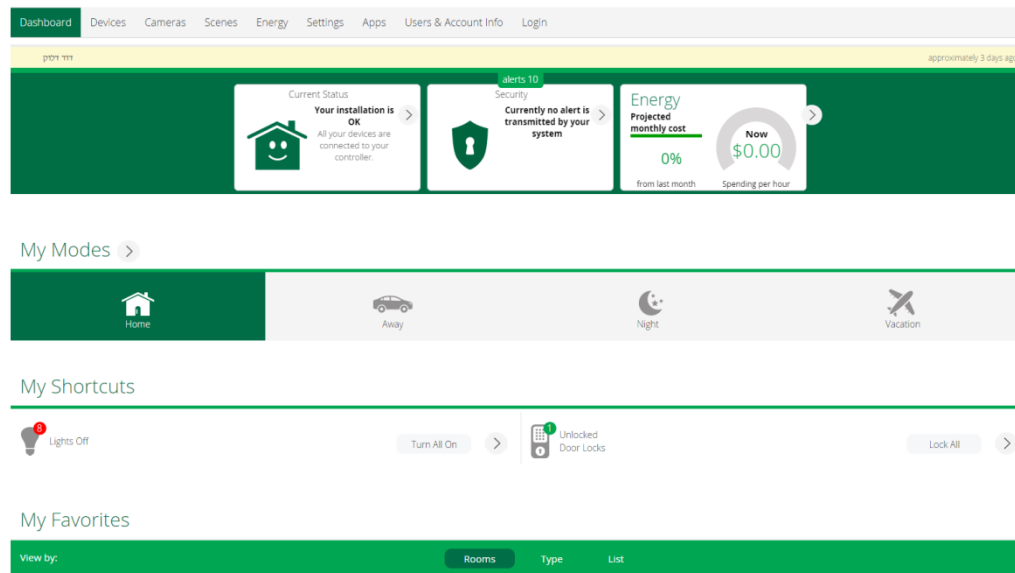




Multimedia all in one APP from your smart device

Audio and Video controller





- Make changes
- Add new devices
- Consumption (energy) rules
- Monitoring
- Auto backup
- Schedule
- Scenarios
- 4 Different modes (Home, Away, Night and Vacation)
- Supported HD Cameras

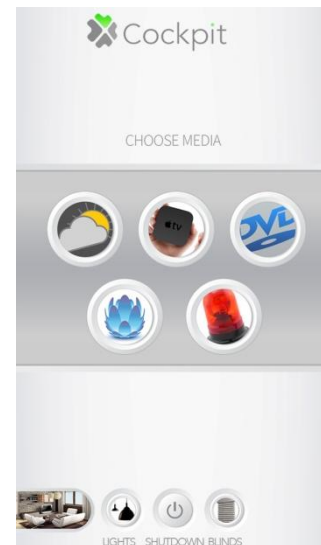


Audio Video, Custom solution For professional installers

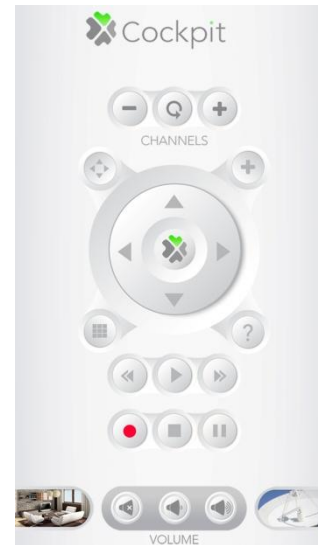
Zone select



Media select



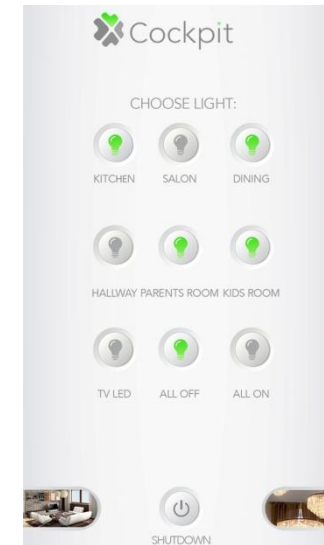
Panel control



Shortcuts
Side bar



Lights control




Why Cockpit?

- In today's market, there are many different companies with similar solutions, but none of them offer the exact solution and the same way to control.
- Cockpit offers the most updated system that supports everything in your home, from electricity to multimedia.
- YourCockpit supports any IOT products in its AV (audio Video) application
- Competitors don't allow the same range of solutions like YourCockpit.
YourCockpit controls all devices, both old and new. Other solutions require new devices, such as smart TV or media streamer, YourCockpit can manage any existing electrical device on the market.
- YourCockpit works on Z-WAVE Plus technology, the newest RF technology for smart home. No BUS (wired solution) required, or PLC (Programmable Logic Controller).
YourCockpit can be installed in any house - new and old.
- Cockpit is the first company that offers full smart home solution in low cost price.



The image shows a physical Nest smart thermostat on the left and an iPhone displaying the Nest mobile app on the right. The thermostat is a circular device with a black outer ring and a silver-colored center. The screen displays the Nest logo at the top, a blue circular temperature gauge in the center with the number '72' and a green leaf icon, and the text 'Good Day' above the temperature. The iPhone screen shows the Nest app interface, which includes the Nest logo, a blue circular temperature gauge with the number '72' and a green leaf icon, and the text 'Good Day' above the temperature. The app also displays 'DOWNSTAIRS' and 'UPSTAIRS' buttons at the bottom.



Lockitron

Lock your door from anywhere in the world.

Lockitron fits over the inside of your current deadbolt & easily installs in seconds.



The End

Thank You

Visit: yourcockpit.biz web site